



# Remote Learning Partners Information Session ("Options 4 and 5")

2 p.m., Wed., August 5, 2020

# CONTENTS

**01 Welcome**

**02 Remote Learning Partner Information**

**03 Q&A**

01

Welcome

# What penguin image best depicts how you are feeling right now?

A



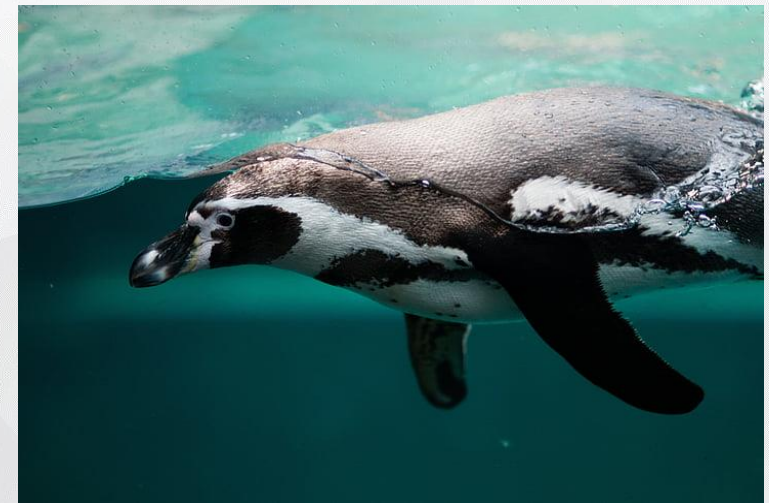
D



C



B



E

# DESE Contacts

## Option 4: CMVS Courses – with instructional services

- Alison Bagg, [Alison.W.Bagg@mass.gov](mailto:Alison.W.Bagg@mass.gov), 781-870-7277
- Ruth Hersh, [Ruth.E.Hersh@mass.gov](mailto:Ruth.E.Hersh@mass.gov)

## Option 5: LMS with K – 12 full course content

- Cliff Chuang, [cliff.chuang@mass.gov](mailto:cliff.chuang@mass.gov), 781-605-5573
- Leo Brehm, DESE Tech Consultant, [leobrehm@capecodcollaborative.org](mailto:leobrehm@capecodcollaborative.org), 774-469-0011
- Procurement questions: Al Rego, [Albano.Rego@mass.gov](mailto:Albano.Rego@mass.gov)

**Remote Learning in General:** Jackie Gantzer, [Jacquelyn.M.Gantzer@mass.gov](mailto:Jacquelyn.M.Gantzer@mass.gov)



**THE LOOK U GIVE UR FRIEND**

**WHEN THE TEACHER SAYS FIND A  
PARTNER**

02

## Remote Learning Partner Information

# On the Desktop 8/4/20 - Remote Learning Partner Information

Following the release of DESE's [remote learning guidance](#) (from July 24, 2020), we are providing additional information about specific partners districts can select for remote learning options 4 and 5 (pages 13 and 14):

- Option 4: Purchase courses provided through Commonwealth of Massachusetts Virtual Schools (CMVS) – **with instructional services**
- Option 5: Purchase student licenses for a Learning Management System (LMS) with K – 12 full course content included – **without instructional services**



# Remote Learning Partner Survey

Following the release of DESE's [remote learning guidance](#) (from July 24, 2020), we are providing additional information about specific partners districts can select for remote learning options 4 and 5 (pages 13 and 14):

- [Remote Learning Partner Interest Survey](#) by 5 p.m., Friday, August 7
- This will support coordination and collaboration with these partners (so they can staff up and plan for providing support), please fill out this brief,
- **Note:** DESE is planning to sponsor (i.e., pay for) state-level training sessions on these platforms for educators in late August depending on district interest as identified through this survey—so please provide the best data you can

## Option 4: CMVS Courses – with instructional services

Commonwealth Virtual Schools (CMVS) can provide **individual courses** or a **full bundle of courses** to schools or districts through an agreement that allows the student to remain enrolled in their home district. These courses must meet the district's or school's standards and requirements. **The CMVS provides the teacher**, the learning management system/curriculum platform, the courses, synchronous or asynchronous content, assignments, and assessments. Districts would assign educators and/or other staff members to monitor student progress and provide additional supports.

- **Alignment to district-wide plan:** Serves best as a stand-alone program for a small percentage of students who require remote-only programming. Does not lend itself to students moving between in-person, hybrid, and/or remote settings.
- **Staffing needs:** Requires assigning teachers/staff to monitor and facilitate student progress, but no direct instruction for core content.
- **Cost:** Around \$350-\$575 per student per semester-long course. Districts may also purchase course “bundles” for students to cover all required courses for a semester or a full year.

# Option 4: CMVS Courses – with instructional services

Likely Best For	Benefits	Challenges
<ul style="list-style-type: none"><li>• Districts with staffing concerns (number available and prepared for remote instruction)</li><li>• Districts that experienced many challenges with remote learning in the spring</li><li>• Districts with a small percentage of students needing or choosing full-time remote instruction</li><li>• Districts with specific gaps in remote instructional offerings that individual courses could fill effectively</li></ul>	<ul style="list-style-type: none"><li>• Students access a single or full suite of grade-level, semester-long courses that include a learning management system, content, and synchronous and asynchronous instruction with a Massachusetts-certified teacher</li><li>• Can fill gaps in courses/subjects, particularly in the secondary grades</li><li>• Requires minimal district planning and staffing resources</li></ul>	<ul style="list-style-type: none"><li>• Requires an additional cost per student</li><li>• Curriculum may not be aligned with district’s existing curriculum; doesn’t lend itself to students moving between in-person, hybrid, and remote learning throughout the semester</li><li>• Districts would need a separate plan if all students went remote</li><li>• Districts will have to establish a purchasing agreement with one of two CMVS; limited spaces available</li></ul>

# Option 4: CMVS Partner Introductions

Meet our CMVS partners, who will:

1. Introduce themselves and their organization
2. Provide a brief snapshot of a day/week in the life of a student taking a CMVS course(s).
3. Provide a brief snapshot of a day/week in the life of an educator supporting a student taking a CMVS course(s).
4. Highlight any supports they provide for students with disabilities and English Learners.
5. Share how best to find out more about partnership.

# Option 4 Partners: CMVS Courses – with instructional services



Salah E. Khelifaoui  
Executive Director/Superintendent  
[skhelifaoui@gcvs.org](mailto:skhelifaoui@gcvs.org)



Patrick Lattuca Superintendent  
1-774-315-5123, ext. 316  
[plattuca@tecca.connectionsacademy.org](mailto:plattuca@tecca.connectionsacademy.org)

# Option 5: LMS with K – 12 full course content

While districts may purchase licenses from a virtual course and content provider at any time, DESE has established partnerships with vendors that could provide a stand-alone, self-paced LMS populated with full K-12 content that can be used by students to cover the basic curriculum standards on a largely asynchronous basis. **While this platform would not depend on frequent synchronous live teaching, it would require assigned and targeted educator check-in/coaching support from the district/school and would benefit from added synchronous instructional opportunities.**

- **Alignment to district-wide plan:** Serves best as a stand-alone program for a small or large percentage of students who are interested in a remote learning option for a longer period of time. Does not lend itself to students moving between in-person, hybrid, and/or remote settings unless the district decides to adopt the LMS-provided curriculum for all students.
- **Staffing needs:** Requires assigning teachers/staff (e.g. educators who must work remotely) to monitor and facilitate student progress, provide additional support, and possibly to provide tutoring or other live, synchronous opportunities.
- **Cost:** Around \$200 per student but far less with site/enterprise licenses.

# Option 5: LMS with K – 12 full course content

Likely Best For	Benefits	Challenges
<ul style="list-style-type: none"><li>• Districts with staffing concerns (concerned about the number of staff available and prepared for remote instruction)</li><li>• Districts with limited technology and system infrastructure to create and oversee a fully remote program</li><li>• Districts with individual students/families who are interested in a fully remote option for a longer period of time.</li></ul>	<ul style="list-style-type: none"><li>• Students access a full suite of courses that include an LMS and instructional content that is largely self-directed and asynchronous.</li><li>• Supplements district staffing with additional resources</li><li>• Allows for easier collaboration and sharing of resources across school and district boundaries (e.g., grouping students at the same grade level and/or sharing teachers)</li></ul>	<ul style="list-style-type: none"><li>• Requires an additional cost per student</li><li>• Depending on the number and configuration of participating students, the district may need to creatively assign educators to student groups, such as assigning an educator to support multiple grade levels and/or students across multiple schools.</li><li>• Curriculum is not aligned with district curriculum and doesn't easily lend itself to students moving between in-person, hybrid, and remote throughout the year (unless the district adopts the LMS curriculum for all students).</li></ul>

# Option 5: LMS+Content Partner Introductions

Meet our LMS+content partners, who will:

1. Introduce themselves and their organization
2. Provide a brief snapshot of a day/week in the life of a student using the LMS+content.
3. Provide a brief snapshot of a day/week in the life of an district educator teaching a student using the LMS+content system.
4. Highlight any supports they provide for students with disabilities and English Learners.
5. Share how best to find out more about partnership.





# Option 5 Partners: LMS with K – 12 full course content



Greg Moore  
Account Executive  
774-238-0945  
[greg.moore@edgenuity.com](mailto:greg.moore@edgenuity.com)

<https://www.edgenuity.com/states/massachusetts/>

[Video: Edgenuity Demo - Algebra I  
Student and Teacher Experience](#)



Jennifer Slater  
Account Manager  
484-614-7624  
[jslater@flvs.net](mailto:jslater@flvs.net)

<https://www.flvsglobal.net/massachusetts/>

[Video; Explore Online  
Learning with FLVS Global](#)

# Remote Learning Partners - Next Steps

## Considerations for Next Steps:

- Take the [Remote Learning Partner Interest Survey](#) by 5 p.m., Friday, August 7
- Establish a local advisory committee (educators, parents, students) to “test-drive” one or more of the platforms provided by partners to help inform a local decision.
- Reach out to DESE/partners to find out more information (contact information on the Partner Information sheets).
- Prepare for professional development needs based on the number of students and educators you anticipate will use one of these options.

03

Q&A

# THANK YOU

---

